

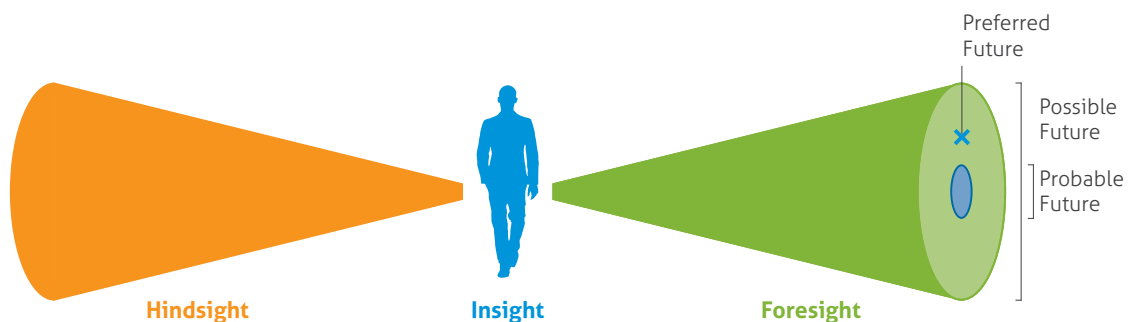
2014 / 2015

Annual  
Integrated  
Report

MCGUINNESS INSTITUTE

The McGuinness Institute is:

a non-partisan think  
tank working towards  
a sustainable future,  
contributing strategic  
foresight through evidence-  
based research and policy  
analysis.



#### OUR LOCATION

We are situated in the Wellington Free Ambulance Building at Level 2, 5 Cable Street, Wellington.

#### CONTACT US

We welcome your feedback. Please contact us on 04 499 8888 or at [enquiries@mcguinnessinstitute.org](mailto:enquiries@mcguinnessinstitute.org).

# Contents

FROM THE CHIEF EXECUTIVE	1
PUBLICATIONS	3
PROJECT 2058	4
LOCALNZ WORKSHOP	7
WORKSHOP PARTICIPANTS	11
INTERNATIONAL AFFILIATES	14
ANALYTICS	15
THE LIBRARY	17
THE STAFF	18
EXTERNAL REVIEWERS	20
ANNUAL FINANCIAL REPORT	21

# FROM THE CHIEF EXECUTIVE

At a time when the international community is facing human, environmental, economic, political and cultural challenges on an unprecedented scale, New Zealand has never been more closely linked to the global economy and world governance through our role on the UN Security Council (2015 and 2016) and our membership to the Executive Board of the World Health Organisation (2015 to 2018). New Zealand can take this opportunity to lead by example.



The exploitation of rapidly developing technology (e.g. in medicine, food production, transportation and warfare) and the mass migration of our global population are putting further pressure on our global economy, trade partnerships and inequity. We have work to do. Given this background, I have been developing some key principles to guide our work programme going forward:

**Principle 1: To focus on Choice not Freedom**

**Principle 2: To focus on Fairness not Equality**

**Principle 3: To focus on Family not the Individual**

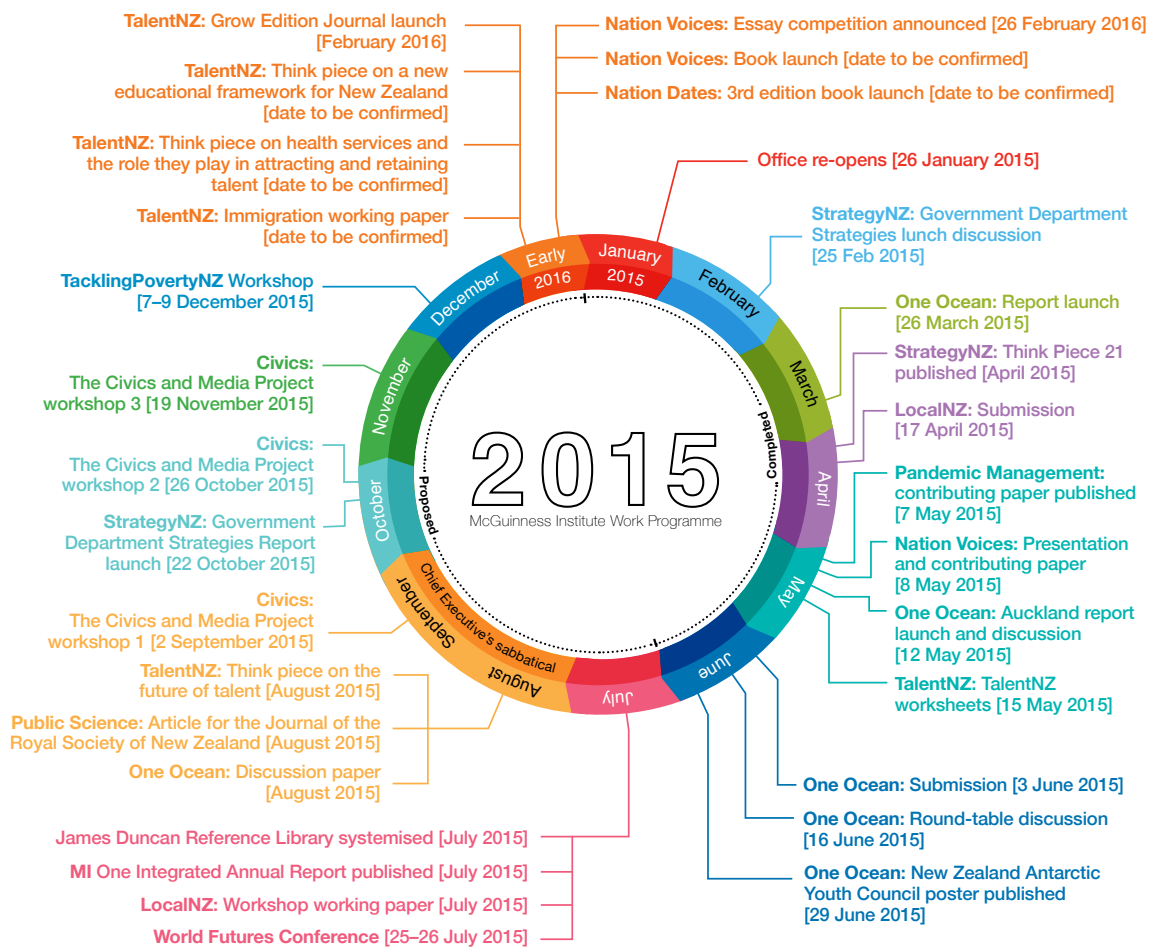
The McGuinness Institute 2014/2015 work programme has touched on both global and specific issues as our country navigates its way into the future. This work programme (right) illustrates what we have achieved over the last 12 months in collaboration with our partners. Thank you to all those that support our work, it means a great deal to live one's life surrounded by generous and passionate people.

Thank you.

A handwritten signature in dark ink, appearing to read 'Wendy McGuinness'.

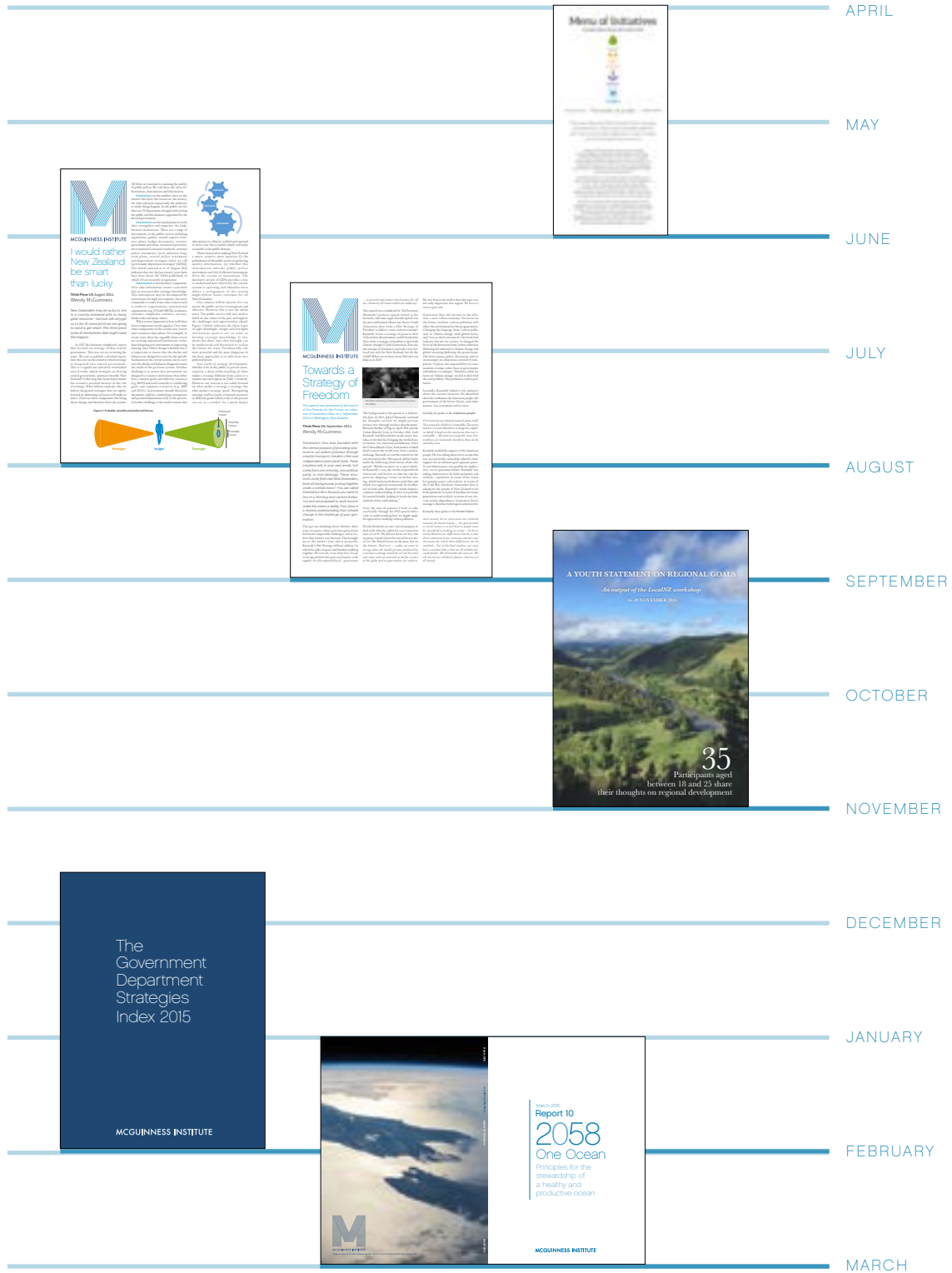
Wendy McGuinness  
Chief Executive  
September 2015

## Work programme as at 1 July 2015



# PUBLICATIONS

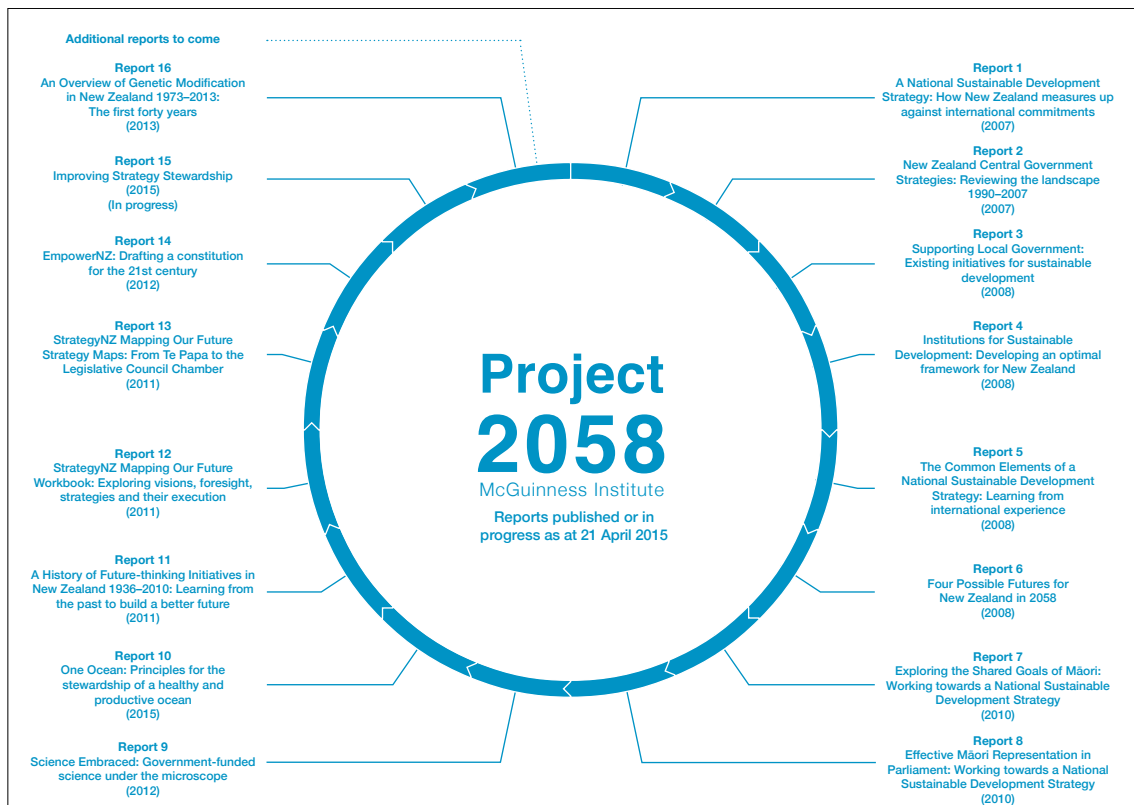
APRIL 2014–MARCH 2015



# PROJECT 2058

The strategic aim of *Project 2058* continues: it is to promote integrated long-term thinking, leadership and capacity-building, so that New Zealand can effectively explore and manage risks and opportunities over the next 50 years. Sitting within *Project 2058* are a number of subprojects (listed below).

All projects can be found on the website: [www.mcguinnessinstitute.org](http://www.mcguinnessinstitute.org).



December 2014 (Cont.)	Charles Montgomery, <i>Happy City: Transforming our lives through urban design</i> (November 2013)
	Bruno Lanvin and Paul Evans, <i>Global Talent Competitiveness Index (GTCI)</i> , (2013)
	Terrie Moffit, Richie Poulton and Avshalom Caspi, <i>Lifelong Impact of Early Self Control</i> (2013)
	<i>The Future of Work: Jobs and Skills in 2030</i> UK Government commissioned report by Z-punkt The Foresight Company, University of South Wales and the UK Commission for Employment and Skills (UKCES) (February 2014)
	Michael Field, <i>The Catch: How fishing companies reinvented slavery and plunder the oceans</i> (2014)
	Gareth Cook, <i>The Best American Infographics 2014</i> (2014)
	Judith Rodin, <i>The Resilience Dividend</i> (2015)
	Richard Hamblyn, <i>The Art of Science: A natural history of ideas</i> (2011)
Tom Brooking, <i>Richard Seddon: King of God's Own</i> (2014)	

Date	YouTube Videos
May 2014	Tim Bennett – TalentNZ Tour – 20 March 2014
	Roger Dennis – TalentNZ Tour – 20 March 2014
	Jim Flynn – TalentNZ Tour – 18 March 2014
	Paul Hansen – TalentNZ Tour – 18 March 2014
	Raf Manji – TalentNZ Tour – 20 March 2014
June 2014	Janice Feutz – TalentNZ Menu of Initiatives Launch – 11 June 2014 (8/9)
	Hayden Glass – TalentNZ Menu of Initiatives Launch – 11 June 2014 (4/9)
	Colin Lynch – TalentNZ Menu of Initiatives Launch – 11 June 2014 (5/9)
	Raf Manji – TalentNZ Menu of Initiatives Launch – 11 June 2014 (6/9)
	Sam Morgan – TalentNZ Menu of Initiatives Launch – 11 June 2014 (1/9)
	Patrick Nolan – TalentNZ Menu of Initiatives Launch – 11 June 2014 (9/9)
	Mandy Simpson – TalentNZ Menu of Initiatives Launch – 11 June 2014 (3/9)
July 2014	Andrew Coy – TalentNZ Menu of Initiatives Launch – 11 June 2014 (7/9)
	Graeme Wong – TalentNZ Menu of Initiatives Launch – 11 June 2014 (2/9)
	Bronwen Golder – One Ocean – 27 May 2014 (1/3)
	Ann McCrone – One Ocean – 27 May 2014 (2/3)
	James Palmer – One Ocean – 27 May 2014 (3/3)
August 2015	Dr Todd Capson – Introduction (1/5)
	Dr Todd Capson – What keeps him awake at night over ocean management? (2/5)
	Dr Todd Capson – How he thinks ocean policy may play out over the next 20-30 years? (3/5)
	Dr Todd Capson – How he thinks ocean management should play out over the next 20-30 years? (4/5)
	Dr Todd Capson – What New Zealand/New Zealanders might do to contribute? (5/5)
December 2015	LocalNZ – Final Presentation – 19 November 2014
	LocalNZ – Growing living standards across a diverse nation – 19 November 2014
January 2015	LocalNZ Documentary: The Deep Country: New Zealand visits the Whanganui River

Date	YouTube Playlists
August 2014	Dr Todd Capson discusses ocean acidification (5 videos)
May 2014	TalentNZ National Tour – March 2014 (5 videos)
June/July 2014	TalentNZ Menu of Initiatives Launch – 11 June 2014 (9 videos)
July 2014	One Ocean: A structured Discussion – 27 May 2014 (3 videos)
January 2015	LocalNZ Workshop 16-19 November 2014 (3 videos)



Date	Reports
February 2015	<i>The Government Department Strategies Index 2015</i>
March 2015	<i>Report 10: One Ocean: Principles for the stewardship of a healthy and productive ocean</i>

Date	Workshop Papers
November 2014	<i>LocalNZ: A Youth Statement on Regional Goals</i>

Date	Working Papers	Background to
October 2014	<i>2014/01: List of Government Department Strategies Between 1 July 1994 and 30 June 2014</i>	<i>Project StrategyNZ</i>
December 2014	<i>2014/02: Analysis of Government Department Strategies Between 1 July 1994 and 30 June 2014 – An overview</i>	<i>Project StrategyNZ</i>
January 2015	<i>2015/01: Ocean Management in New Zealand: Findings from a structural discussion</i>	<i>Project One Ocean</i>
February 2015	<i>2015/02: Assessment of Organisations Involved With the Antarctic and Their Engagement With New Zealand Youth</i>	<i>New Zealand Antarctic Youth Council</i>
March 2015	<i>2015/03: Legal Instruments of New Zealand's Ocean Management</i>	<i>Project One Ocean</i>

Date	Media Releases
June 2014	<i>TalentNZ Menu of Initiatives: Creating a place where talent wants to live</i>
February 2015	<i>Work Programme 2015</i>
March 2015	<i>One Ocean report launch</i>

Date	Think Pieces
August 2014	<i>Think Piece 19: 'I would rather New Zealand be smart than lucky'</i>
September 2014	<i>Think Piece 20: Towards a Strategy of Freedom</i>

Date	Written Submissions
April 2014	Submission on the Environmental Reporting Bill
August 2014	Submission on the Draft National Statement of Science Investment

Date	McGuinness Institute e-Newsletters
May 2014	Issue 13
January 2015	Issue 14

Date	TalentNZ e-Newsletters
April 2014	Issue 2
July 2014	Issue 3
September 2014	Issue 4
December 2014	Issue 5

Date	Book Reviews published on the McGuinness Institute Blog
May 2014	Philip Joseph, <i>Constitutional and Administrative Law in New Zealand</i> , 4th Edition (2014)
December 2014	McGuinness Institute, <i>A Youth Statement on Regional Goals: An output of the LocalNZworkshop</i> (December 2014)
	Shamubeel Eagub, <i>Growing Apart: Regional prosperity in New Zealand</i> (2014)
	Emily Moir, Tim Moonen and Greg Clark, 'The Future of Cities: What is the global agenda?' (from the UK Government Foresight Future of Cities Project, September 2014)

# LOCALNZ WORKSHOP

16-19 NOVEMBER 2014

## **LocalNZ: Connecting youth committed to Local Government**

*LocalNZ* was a four-day workshop that brought together 35 young New Zealanders, providing a collaborative space for them to identify existing and emerging opportunities and challenges. This initiative formed part of the Institute's *TalentNZ* project – creating an informed, focused and networked group of young New Zealanders able to engage effectively with government and the communities in which they live. Participants explored the question: How do regional goals align with national goals, and how might these goals need to change in order to aid regional growth? The first two days were spent at the *A Place to Live* conference in Wanganui, followed by a day where the participants focused on workshopping their thoughts and observations at Treasury. On the final day participants presented their combined thinking at two presentations; one held at Parliament and the other was a skype presentation to the *A Place to Live* conference. There were eight outputs from this workshop. One of which is the booklet: *A Youth Statement on Regional Goals*. This outlines the participants' observations and recommendations, page XX is an excerpt from the booklet. More about the workshop can be found at [www.localnz.org](http://www.localnz.org).<sup>1</sup>



*LocalNZ* participants with Girol Karacaoglu, chief economist of the New Zealand Treasury.

1. This workshop was a collaboration between the New Zealand Treasury, Wellington City Council, the MacDiarmid Institute and Victoria University of Wellington, in association with the Royal Society of New Zealand, Wanganui.

# The Mokopuna Clause

Underlying challenges we face attaining regional and national goals is an absence of visionary leadership. Past leaders surely could have done more to ensure long-term success for our regions. This is where the mokopuna clause can play a role. 'Mokopuna' means grandchildren, and the clause is about making decisions with our descendants in mind.

The idea was inspired from a community project by a local iwi in Tolaga Bay, Gisborne. They transformed what was originally a typical surf-life-saving activity into a project that would benefit the generations that they may not even meet. They went the extra mile. This involved adding extra activities to the standard training, such as operating traditional waka and gathering kaimoana properly. The aim of their programme was to develop effective lifeguards and to teach rangatahi how to be safe and capable in a marine environment.

As technology advances, society suffers the instant-noodle syndrome. We expect results to show faster than ever; we are happy to fill ourselves with a quick meal – even at the expense of our health and happiness. We have lost the quality of patience. We are quickly moving towards a state where progress and urbanisation often comes at a cost of increased pollution, the exhaustion of natural resources, the ignorance of climate change issues and the despoliation of developing nations. However, decision-making cannot afford this lack of patience. Our world cannot. We need to reverse this societal trend that is working against the benefits of acting towards a vision of a better future.

People think Christchurch is about tradies, earthquakes and swamplands, but for me it is home because it is a quirky foodie's wonderland with mountains, rivers, beaches and a central-city lifestyle all within a 20-minute drive. There is no stereotypical culture of people here, so the whole city is ripe with opportunity to be unique and creative in how you express yourself. Our community is resilient.

People think Auckland is about inflated house prices and crowded streets, but for me it is home because it promotes diversity and it provides a preparation platform for today's international world.

The possibilities for how this clause will develop are endless. It could simply be a tool to be used in meetings to evoke visionary dialogue; it could be part of the terms of reference for council meetings, be in the job descriptions of our mayors and MPs or even become part of our national constitution, joining other pioneering nations in a legal commitment to the principle of intergenerational responsibility.

As in the case of Whanganui River, it could also mean the recognition of our natural environment as an entity significant not only in its own right but also to our very own existence. Working alongside the recognition of our connection to nature in institutions, regional areas and cities, New Zealand can once again lead the world forward, greening urban spaces and revolutionising the way we perceive our natural environment legally.

The mokopuna clause has the potential to close the inequality gap between present and future generations. It gives a voice to those who are not yet here to speak for themselves. It is about more than just considering the effects of actions on the future; it is about committing decision-makers to planning for the betterment of generations they will never meet.

Critics may doubt the utility of this clause. They may argue that humanity cannot fathom what is beyond the horizon. They may say that it is impossible to plan, let alone imagine, the future. What a cowardly excuse that is to give our mokopuna. The fact that we won't be around to see the effects of our decisions is no excuse to say 'We won't plan for your generation because we are afraid to imagine'. When you develop a country that keeps their mokopuna at the forefront of decision-making, you can envisage a future with innovative foresight-minded policies that throw partisan politics to the curb. You can truly create a beautiful place to live.

Lauren McGee and Sam Yoon



Day 2: Whanganui River stones painted by the children of Hiruharama Marae, Jerusalem. (Photo by Jack Marshall)



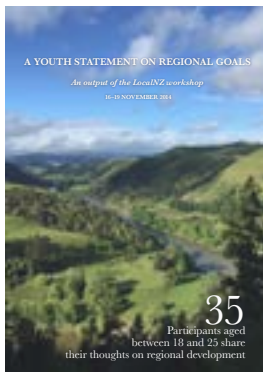
*LocalNZ* workshop November 2014. Clockwise from top left: Wendy welcoming guests to *LocalNZ* workshop in Wanganui; participants arrive at Koriniti Marae, Whanganui; participants workshopping inside Koriniti Marae; participant Jessie Waite with a child from Te Wainui a Rua School; participants are welcomed to Te Wainui a Rua School, Ranana by Principal Karleen Marshall; Richard Louv and Professor Charles Daugherty during the Q & A session with Richard Louv at the Wanganui War Memorial Centre; speaker Peter Hardy talking about the history of the Whanganui River on the Wanganui Riverboat; participants are shown around Chronicle Glass Studio, Wanganui.



*LocalNZ* workshop November 2014. Clockwise from top left: Bill Moran welcoming the participants to the New Zealand Treasury; Human Rights Commissioner, David Rutherford working with a group of participants at the Treasury; Mike Reid presenting 'Session Five: Reflections and observations'; participant Alison Faulls discusses specific issues that led to the participants' recommendations during the final presentation at Parliament; *LocalNZ* participants Skype presentation to the 'A Place to Live' conference; participant Jesse Medcalf addresses guests during the final presentation at Parliament; participant Nasra Abdi receives certificate for completing the *LocalNZ* workshop from Dr Girol Karacaoglu ; group work during the 'Creative Thinking Tools' session run by Treasury staff featuring participant Regan Thwaites.

# WORKSHOP PARTICIPANTS

## LocalNZ 2014



Nasra Abdi  
Matthew Barry  
David Bassett  
Heavenlee Bray  
Bradley Clarke  
Yanni Cowie  
Samantha Curtis  
Cara des Landes  
Alison Faulls  
Lincoln Haworth  
Aisha Huriwai  
Sean Johnson  
Janelle Jones  
Jared Kennedy  
Hamish Keown  
Christoph Kraus  
Angela Lim  
Shivani Makwana

Jack Marshall  
Lauren McGee  
Jesse Medcalf  
Grace Nunn  
Hannah Payne-Harker  
Nyssa Payne-Harker  
Oska Rego  
Pauline Robertson  
Jason Sebastian  
Regan Thwaites  
Milovale Tiatia  
Mahoney Turnbull  
Sarah Van Looy  
Rebecca Vergunst  
Jessie Waite  
Leah Wilkie  
Sam Yoon

### Facilitators

Wendy McGuinness  
Hannah Steiner

### Designers

Meg Howie  
Sun Jeong  
Ellyse Randrup

## LivingStandardsNZ 2013



Nasra Abdi  
Ben Abraham  
Tipene Apatu  
Nasif Azam  
Minishka Bradley  
Patrick Broman  
Alexandra Bunge  
Elizabeth Cole  
Riley Divett  
Tracy Finlayson  
Avril Gillan  
Wiliame Gucake  
Edward Haslam

Ropeti Huntley  
Ngahuia Leighton  
William Makea  
Jesse Medcalf  
Renata Mokena-Lodge  
Abbas Nazari  
Erin Roxburgh  
Wiremu Stone  
Kristian Tekie  
Milovale Tiatia  
Erana Walker  
Leilani Walker  
Otene Wineera

Raymond Wong

Angela Yiavasis

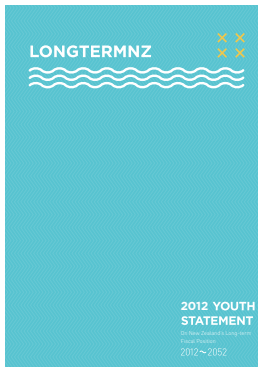
### Facilitators

Wendy McGuinness  
Renata Mokena-Lodge  
Annie McGuinness

### Designers

Ryan Gallagher  
Kieran Stowers

## LongTermNZ 2012



Ben Abraham  
Jason Armishaw  
Emma Banks  
Rachel Boswell  
Louis Chambers  
Ashleigh Cox  
Maria English  
Penny Garty  
John Hughes  
Susie Kriebler  
Athene Laws  
Niki Lomax  
Josie McGuinness  
Michael Moore-Jones

Finn O'Dwyer-Cunliffe  
Elye Parata  
Leona Plaisier  
Elizabeth Prasad  
Christopher Read  
Asha Rhodes  
Karri Shaw  
Ella Spittle  
Diana Tam  
Julia White  
Amy Wood  
Paul Young  
Darren Zhang

### Interns

Maria English  
Penny Garty  
Josie McGuinness  
Ella Spittle

### Facilitators

Wendy McGuinness  
Niki Lomax

### Designers

Gillian McCarthy  
Angus McBryde  
Kieran Stowers

## EmpowerNZ 2013



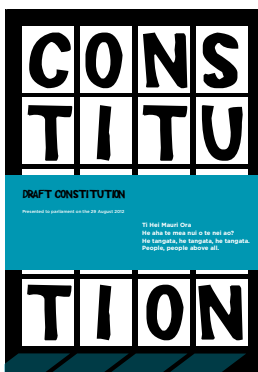
Jessica Bush  
Louis Chambers  
William Fussey  
Emma Gattey  
Charlotte Greenfield  
Lauren McGee  
Lydia Nobbs  
Elye Parata  
Rosa Polaschek

Oska Rego  
Jack Starrett Wright  
Diana Tam  
Jeremy Todd  
Morgan Watkins  
Julia White

### Facilitators

Mihiata Pirini  
Marcelo Rodriguez Ferrere

## EmpowerNZ 2012



Kirsty Allan  
Tele'a Andrews  
Sarah Baillie  
Todd Barrowclough  
Jessica Bush  
Louis Chambers  
Reed Fleming  
William Fussey  
Emma Gattey  
Paula Gillon  
Tiaki Hana Grant-Mackie  
Charlotte Greenfield  
Rachael Jones  
Yezdi Jal Karbhari  
Zachary Kedgley-Foot  
Alex Ladyman  
Richard Ley-Hamilton  
Dipti Manchanda  
Ruth Markham-Short  
Lauren McGee  
Kieran Meredith  
Tiana Morgan  
Duran Moy

Andrew Neate  
Pania Newton  
Chris Nicholls  
Lydia Nobbs  
Helen O'Leary  
Alice Osman  
Ihaperana Paniora  
Elye Parata-King  
Higano Perez  
Joshua Pietras  
Rosa Polaschek  
Sophie Pollak  
Oska Rego  
Stacey Riordan  
Emily Schwikkard  
Sarah Scott  
Christian Silver  
Ryan Smits Maclaine  
Maithili Sreen  
Jack Starrett Wright  
Kieran Stowers  
Diana Tam  
Jeremy Todd  
Morgan Watkins

Julia Whaipooti  
Julia White  
Jeremy Wilson

### Facilitators

Dean Knight (lead facilitator)  
Jess Birdsall-Day  
Natalie Coates  
Carwyn Jones  
Mihiata Pirini  
Marcelo Rodriguez Ferrere  
Diane White  
Edward Willis

### Designers

Gillian McCarthy  
Katy Miller  
Machiko Niimi

### Illustrator

Megan Salole

# StrategyNZ 2011



## Group 1: Emerald green

Alison Nevill (process chair)  
 Don Christie  
 Ben Guerin  
 Sue Hanrahan  
 Simon Harvey  
 Ruth McLennan  
 Christian Silver  
 Joseph Stafford  
 Richard Randerson  
 Grace Ridley-Smith  
 Ema Weepu  
 Katy Miller (designer)



## Group 4: Yellow

Leanne Silver (process chair)  
 Jill Bowman  
 Scott Dalziell  
 Trish Franklin  
 Peter Furnish  
 Carolyn Gullery  
 Neville Henderson  
 Roger Tweedy  
 Hayden Wilson  
 Joshua Jeffery (designer)



## Group 7: Plum

Leanne Holdsworth (process chair)  
 Vibhuti Chopra  
 Marie Collin  
 Krystal Gibbens  
 Anake Goodall  
 Stephen Hay  
 Beat Huser  
 Rebeka Whale  
 Gillian McCarthy (designer)



## Group 9: Red

Jonathan Routledge (process chair)  
 Sheryl Boxall  
 Amy Fletcher  
 David Glover  
 Beth Houston  
 Anna Jacobs  
 Susan Jones  
 Fred Staples  
 Sarah Wakes  
 James Wall-Manning  
 Christian Williams  
 Lara Rapson (designer)



## Group 2: Avocado

Jan Bieringa (process chair)  
 Anthony Cole  
 Geoff Hamilton  
 Mark Hargreaves  
 Caleb Jago-Ward  
 Raf Manji  
 Hugh McDonald  
 Sue Peoples  
 Joanna Randerson  
 Grant Ryan  
 Angus McBryde (designer)



## Group 5: Teal

Murray Wu (Process chair)  
 Mick Abbott  
 Shona Albert-Thompson  
 Desmond Darby  
 Andrea Frost  
 Ben Mason-Atoni  
 David McGuinness  
 Rodger Pringle  
 Kat Thomas  
 John Tocker  
 Machiko Niimi (designer)



## Group 8: Brown

Marty Donoghue (process chair)  
 Storm Adams-Lloyd  
 Rodney Adank  
 Rachel Bolstad  
 Lauren Christie  
 Debbie Dawson  
 Mia Gaudin  
 Damian Lawrence  
 Gareth Moore-Jones  
 Sascha van der Plas  
 Te Ao Pritchard (Te Ao Hinengaro, Te Awhi Paa Trust & Te Runanga o Rauakawa)  
 Scott Savage (designer)



## Group 10: Rust orange

Ella Lawton (process chair)  
 Stephanie Bickerstaff  
 Kaila Colbin  
 Nina Harrap  
 Chris Lipscombe  
 Megan McMullan  
 Barbara Nicholas  
 Sarah Ottrey  
 Ashok Parbhu  
 Brian Penetaka Dickson  
 Peter Rankin  
 Rodney Scott  
 Rhys Taylor  
 Rob Cape (designer)



## Group 3: Purple

Phil Tate (process chair)  
 Paul Atkins  
 Donald Clark  
 Tim Clarke  
 Hamish Gow  
 Maria Ioannou  
 Michael Moore-Jones  
 Hugh Norriss  
 Hilary Sumpster  
 Wayne Silver  
 Jeremy Star (designer)



## Group 6: Navy blue

Ged Lynch (process chair)  
 Stuart Barson  
 Marina Battisti  
 Lance Beath  
 Yvonne Curtis  
 Richard Logan  
 Kieran Meredith  
 Onur Oktem  
 Heike Schiele  
 Matthew Sole  
 Josie Lee Brough (designer)



# INTERNATIONAL AFFILIATES

Our affiliations with international futurist organisations keep us at the forefront of global thought across many areas, including food security, innovation, international treaties, oceans and defence policy. We believe that as a small institution in a geographically isolated country, it is essential to remain informed and to participate actively in conversations on key drivers, challenges and opportunities for our future.

## WORLD FUTURE SOCIETY

In July 2010 the Institute became the New Zealand chapter of the World Future Society. The World Future Society is a non-profit, non-partisan scientific and educational association of people interested in how social and technological developments are shaping the future. Wendy McGuinness has presented at three World Future Conferences on our overarching project: *Project 2058*.

Wendy presented at the World Future Society Conference back in Vancouver 2011 where Peter Bishop, Jess Prendergast and Rory Sarten joined her to present on the *StrategyNZ: Mapping our Future* workshop.

In July this year Wendy, Project Manager Hannah Steiner and Designer Sun Jeong attended the World Future Society Conference in San Francisco and presented our latest work on *TalentNZ*. This was an exciting opportunity to showcase New Zealand as a talent-based economy and share the great initiatives that are happening here.

## WORLD FUTURES STUDIES FEDERATION

Wendy McGuinness is an individual member of the WFSF, a global NGO that was founded in the 1960s to encourage and promote the development of futures studies as a trans-disciplinary academic and professional field in all parts of the world. It operates as a global network of practising futurists, researchers, teachers, scholars, policy analysts, activists and others from approximately 60 countries.

## ASSOCIATION OF PROFESSIONAL FUTURISTS

Wendy McGuinness is also a member of the Association of Professional Futurists. The Association of Professional Futurists is a global community committed to leadership and excellence in the futures field. Members provide unique perspectives to help people anticipate and influence the future.

# ANALYTICS

## PUBLICATIONS

April 2014–March 2015

TOTAL NUMBER OF PUBLICATIONS

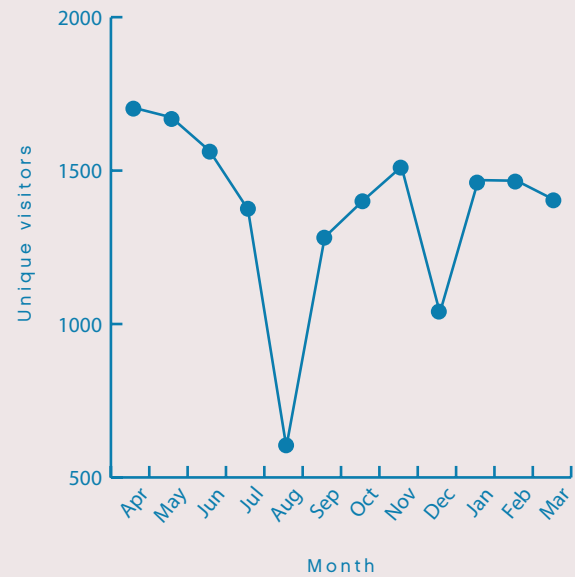
# 59

REPORTS	2
WORKSHOP PAPERS	1
WORKING PAPERS	5
THINK PIECES	2
SUBMISSIONS	2
NEWSLETTERS	6
MEDIA RELEASES	3
BOOK REVIEWS	13
VIDEOS	25

## WEBSITE VIEWS

April 2014–March 2015

(UNIQUE VISITORS)



## SOCIAL MEDIA

As at March 2015

FACEBOOK LIKES	444
TWITTER FOLLOWERS	504
YOUTUBE SUBSCRIBERS	215

## BOOKS IN JAMES DUNCAN REFERENCE LIBRARY

AS AT 31 MARCH 2014

# 4,250

AS AT 31 MARCH 2015

# 4,527



## TOP 10 YOUTUBE VIDEOS

By number of views between April 2014 and March 2015

### YOUTUBE VIEWS

As at March 2014

65,149

As at March 2015

83,610

Video	Views
Sir Paul Callaghan - StrategyNZ: Mapping our Future - March 2011	516
Sam Morgan - Sam's story: entrepreneurship and philanthropy	86
Sam Morgan - Why live and work in New Zealand? (18/24)	76
Sam Morgan - How important is research and development for business? (14/24)	70
Peter Ho - Governing for the Future: What Governments can do	45
Natalie Coates - EmpowerNZ Workshop - 29 August 2012	35
Sir Mason Durie - StrategyNZ: Mapping our Future - March 2011	30
LivingStandardsNZ: 'The Living Legend' Skit	29
Interview With Dr Peter Bishop - A Futures Studies Workshop - WFS Conference Washington DC 2008	27
Dr Apirana Mahuika - Why we need relationships, rather than partnerships (2/6)	24

### LOCALNZ WORKSHOP 16-19 DECEMBER 2014

SPEAKERS	FACILITATORS	PARTICIPANTS	DESIGNERS AND ILLUSTRATORS	FINALE GUESTS
27	2	35	3	100+

### LivingStandardsNZ WORKSHOP 3-5 DECEMBER 2013

SPEAKERS	FACILITATORS	PARTICIPANTS	DESIGNERS AND ILLUSTRATORS	FINALE GUESTS
11	3	28	2	50+

### LongTerm WORKSHOP 9-14 DECEMBER 2012

SPEAKERS	FACILITATORS	PARTICIPANTS	DESIGNERS AND ILLUSTRATORS	FINALE GUESTS
7	3	22	3	100+

### EmpowerNZ WORKSHOP 4-6 JULY 2013

SPEAKERS	FACILITATORS	PARTICIPANTS	DESIGNERS AND ILLUSTRATORS	FINALE GUESTS
3	2	15	0	No finale

### EmpowerNZ WORKSHOP 28-29 AUGUST 2012

SPEAKERS	FACILITATORS	PARTICIPANTS	DESIGNERS AND ILLUSTRATORS	FINALE GUESTS
11	8	50	4	200+

### StrategyNZ WORKSHOP 28-31 March 2011

SPEAKERS	FACILITATORS	PARTICIPANTS	DESIGNERS AND ILLUSTRATORS	FINALE GUESTS
11	10	93	10	200+

# THE LIBRARY



The James Duncan Reference Library was established in October 2009. Our library quickly expanded and the shelves were beginning to bulge. Books are very important to us at the Institute, and we plan to invest further in order to maintain and protect the quality of our collection. We have a large collection of books relating to New Zealand history, strategic foresight and contemporary global and local issues. Broadly, the collection is broken up into three sections: hindsight, insight and foresight. The Institute's collection has reached 4,527 books and publications, and it is still growing.

We have been lucky to have Virginia Dobson join the team to complete this big and exciting task. Virginia is an experienced librarian, having worked for two years at Wellington City Libraries, and has a special interest in the quirks and oddities found in old books. She completed a Bachelor of Arts with Honours in English at Canterbury University in 2012 and is now completing a law degree at Victoria University of Wellington. Below are three of her favourite finds:



## VIRGINIA'S FAVOURITE

- *Anno Domini 2000* (1889) by Sir Julius Vogel (former premier of New Zealand)
- *Nouveau Petit Larousse Illustré* (1927); published by the Librararie Larousse Paris
- *Plants of New Zealand* (1906) by R. M. Liang and E. W. Blackwell

# THE STAFF

We have had a fantastic and varied team over the last financial year with a few staff changes: The Institute has been fortunate to have the continued stewardship of Hannah Steiner, the administrative management of Kirstie McGuinness, the design flare of Sun Jeong, the editorial supervision of Guy Chisholm and the legal and economics guidance of Madeleine Foreman. The core team is supported by a group of hard working, committed and creative young people. Recent examples include Sarah Hall, Sally Hett, Rose Baylis and Freya Daly Sadgrove.

Since the beginning of 2015 there have been some staff changes at the Institute: In February 2015 Miranda Voke left the Institute to work at Victoria University of Wellington. In March 2015 James Tremlett left the Institute to work in Papua New Guinea before he begins his tenure as a Global Fellow in Marine Conservation at Duke University in Durham, North Carolina.

In March 2015 Renata Mokena-Lodge returned to the Institute briefly from her legal advocacy internship with an NGO called Asylum Access in Tanzania. Since late June Renata has been working as an analyst at the Treasury.

In March 2015 Sally Hett joined the Institute as an intern. Sally has recently finished her Bachelor of Arts in politics, philosophy and economics from the University of Otago.

In March 2015 Javiera Villaouta Sandoval joined us as an intern for a few months. Javiera is currently studying communications, majoring in expressive arts and minoring in journalism at Massey University.

In June 2015 Rose Baylis joined us the team on a casual basis. Rose holds a Bachelor in Science, majoring in information science and minoring in computer science from the University of Otago. She is currently studying towards a Diploma in graphic design at Yoobee School of design.

In July 2015 Freya Daly Sadgrove joined the team as an editing intern. Freya has recently finished her Masters Degree in creative writing from the International Institute of Modern Letters at Victoria University of Wellington.

Every summer we hire summer interns. This year we are happy to announce we have Ali Bunge, Allesandra Cuccurullo, Sophie Peat and Callum Webb joining us. Ali Bunge was a participant of our *LivingStandardsNZ* workshop. Allesandra Cuccurullo is currently studying towards a Bachelor in Commerce, majoring in international business, human resources and industrial relations at Victoria University of Wellington. Sophie Pear graduated from the University of Otago with a Law and Political Studies degree in December 2014. Callum Webb is currently in the final year of studying a Bachelor of Commerce, majoring in Economics and Finance at the University of Auckland. Has recently worked as an intern at The New Zealand Institute of Economic Research.

As at July 2015 the team has included: Aidan Beckett, Alison Nevill, Amelie Goldberg, Angus McBryde, Annie McGuinness, Becky McGuinness, Caroline Ward, Charlotte Greenfield, Chris Aitkin, Dave Henley, Diane White, Ella Lawton, Ella Spittle, Freya Daly Sadgrove, Gillian McCarthy, George Spittle, Grace White, Guy Chisholm, Hanna Butler, Hannah Murphy, Hannah Steiner, Hayley Vujcich, Helena Hallagan, James Tremlett, Jamie Winiata, Javiera Villaouta Sandoval, Jean-Charles Perquin, Jeremy Todd, Jess Prendergast, Jo Foster, Jo Garty, Joe McCarter, Josie McGuinness, Kelly Gordon, Kieran Stowers, Kirstie McGuinness, Lara Rapson, Lisa Bazalo, Liz Allan, Louise Grace-Pickering, Lucy Foster, Luke Herlihy, Lydia Nobbs, Madeline Foreman, Mahina-a-Rangi Baker, Maree Grigg, Maria English, Maria Gorham, Mark Newton, Meghan Collins, Mia Gaudin, Michelle Bazalo, Miranda Voke, Miriam White, Mitchell Lee, Nick Preval, Nicola Bradshaw, Niki Lomax, Patrick Farrell, Patrick Shonakan, Patrick Walsh, Paul Neason, Penny Garty, Perrine Gilkinson, Renata Mokena-Lodge, Rhett Hornblow, Richard Shonakan, Rory Sarten, Rose Baylis, Ryan Gallagher, Sally Hett, Sarah Garty, Sarah Hall, Sarah Wilson, Sophie Taylor, Stephanie Versteeg, Sun Jeong, Susie Krieble, Willow Henderson and many others.

# The team

APRIL 2014–July 2015



**WENDY MCGUINNESS**

Chief Executive

wmcg@mcguinnessinstitute.org



**HANNAH STEINER**

Project Manager

hs@mcguinnessinstitute.org



**KIRSTIE MCGUINNESS**

Administration

km@mcguinnessinstitute.org



**SUN JEONG**

Head Designer

sj@mcguinnessinstitute.org



**GUY CHISHOLM**

Editor and Research Analyst

gc@mcguinnessinstitute.org



**RENATA MOKENA-LODGE**

Research Analyst

rm@mcguinnessinstitute.org



**MIRANDA VOKE**

Research Analyst

mv@mcguinnessinstitute.org



**JAMES TREMLETT**

Research Analyst

jt@mcguinnessinstitute.org



**MADELEINE FOREMAN**

Intern

mf@mcguinnessinstitute.org



**GEORGE SPITTLE**

Intern

gs@mcguinnessinstitute.org



**SARAH HALL**

Intern

sh@mcguinnessinstitute.org



**SALLY JANE HETT**

Intern

sjh@mcguinnessinstitute.org



**FREYA DALY SADGROVE**

Editorial assistant

fs@mcguinnessinstitute.org



**SOPHIE PEAT**

Intern

sp@mcguinnessinstitute.org



**ALI BUNGE**

summer Intern

ab@mcguinnessinstitute.org



**CALLUM WEBB**

Intern

cw@mcguinnessinstitute.org



**ROSE BAYLIS**

summer Intern

rb@mcguinnessinstitute.org



**ALLESSANDRA CUCCURULLO**

Intern

ac@mcguinnessinstitute.org

## Scholarships and Internships

The McGuinness Institute is committed to the development of talent amongst 18–25-year olds, and as such we offer both paid internships to work at the Institute and two scholarship programmes. Please find more details on our website.

# WE WOULD LIKE TO THANK ALL THE EXTERNAL REVIEWERS WHO HAVE CONTRIBUTED THEIR TIME

We are very fortunate to receive help, advice and support from many experts who give their time to explore ideas, check the accuracy and completeness of facts, discuss our conclusions and suggest effective ways forward. For more information, please see our list of external reviewers and our external review policy at [www.mcguinnessinstitute.org](http://www.mcguinnessinstitute.org). In particular, we would like to acknowledge:

Dr Sharon Adamson, Dr Eric Assendelft, Richard Athorne, Dr Susan Avery, Dr David Band, Jamie Band, Eric Barnes, Dr Felicity Barnes, Dr Anne Barnett, Tim Bennett, Jan Bieringa, Claire Bleakley, Cr Maxine Boag, Dr Michael Boland, Keitha Booth, Craig Bond, Alastair Boulton, the late Danny Boulton, Dr Rick Boven, Hon. Max Bradford, Dr Janet Bradford-Grieve, Dave Breuer, Denise Brown, Rachel Brown, Deputy Mayor Vicki Buck, the late Sir Paul Callaghan (patron of the Institute), Dr Anna Campbell, Dr Todd Capson, Dr Rachel Carrell, Professor Lionel Carter (patron of the Institute), Dr Wayne Cartwright, Julian Carver, Dr Ralph Chapman, Dr Malcolm Clark, George Clement, Lyal Cocks, Kaila Colbin, Dr Anthony Cole, Professor Marston Conder, Dr Ronnie Cooper, Dr Guy Coulson, Cr Matt Cowley, Dr Andrew Coy, Cr Andy Cranston, Yvonne Curtis, Dave Darling, Dr Peter Davies, Roger Dennis, Dr Elvira Dommissie, Rod Drury, Cr Bev Edlin, Rob Enright, Alex Fala, Tony Falkenstein, Rachel Farrant, Tony Fenton, Cr Craig Ferguson, Jamie Ferguson, Janice Feutz, Gerald Fitzgerald, Jeanette Fitzsimons, Professor Jim Flynn, Dr Bob Frame, Moira Fraser, Kate Frykberg, Bruce Gilkison, Derek Gill, Cr Cath Gilmour, Sir Peter Gluckman, Bronwen Golder, Linda Grammer, Stuart Grant, Mayor Winston Gray, Murray Gribben, Dr Kerry Grundy, Robin Gunston, Andrew Hamilton, Associate Professor Paul Hansen, Myra Harpham, Professor Harlene Hayne, Cr Sandra Hazlehurst, Professor Jack Heinemann, David Henry, Dr Robert Hickson, Nolan Hodgson, Sir Frank Holmes, Dr John Hood, Sophie Howard, Stephanie Howard, Mark Hucklesby, Margaret Hunn, Dr Beat Huser, Colin James, Lindis Jones, Professor Philip Joseph, Sam Judd, Colin Keating, Captain Paul Keating, Cr Tania Kerr, Jonathan King, Dr Stephen Knight-Lenihan, Dr Tahu Kukutai, Fanny Lammers Van Toorenburg, John Lancashire, Dr Ella Lawton, Dr Maggie Lawton, Associate Professor John Leader, Cr Mick Lester, Jason Leung-Wai, Bridget Liddell, Dr Miang Lim, Chris Lipscombe, Cr Paul Lonsdale, Liz MacPherson, Cameron Madgwick, Raf Manji, Dr Nick Marsh, Dr Andrew Matthews, Ross McCleod, Ann McCrone, Mark McGuinness, Dr Malcolm Menzies, Dr Ocean Mercier, Cr Clayton Mitchell, Jeremy Moon, Bill Moran, Cr Darlene Morgan, Sam Morgan, Gareth Moore-Jones, the late Lloyd Morrison, Tevita Motulalo, Professor Tim Naish, Kim Ngarimu, Dr Barbara Nicholas, Tim Nixon, Dr Patrick Nolan, Mike (MOD) O'Donnell, Dame Dr Claudia Orange (patron of the Institute), James Palmer, Dr Matthew Palmer, Dr Ashok Parbhu, Grant Paterson, Raewyn Peart, Dr John Peet, Sherie Pointon, Patrick Power, Becky Prebble, Kerry Prendergast, Dr Stephanie Pride, Stuart Prior, Peter Rankin, Wendy Reid, John Roberts, Dr Lin Roberts, Dr Mere Roberts, Cr John Roil, Professor Jacqueline Rowarth, Phil Royal, Professor Dame Anne Salmond, Katherine Sammler, Professor Caroline Saunders, Rob Schukard, Cr Pat Seymour, Judy Siers, Jeremy Silva, Professor Phil A. Silva, Wayne Silver, Kevin Simpkins (patron of the Institute), Chris Simmons, Jim Sinner, Liz Slooten, Morgan Slyfield, Dr Huhana Smith, William George Soltau, Vaughan Stagpoole, Jack Steer, Roy Sye, Professor Jeff Tallon, Hon. Hugh Templeton, Simon Terry, Dr Steve Thompson, Nat Torkington, Dr John Trail, Frances Valentine, Damien van Brandenburg, Cr Lee Vandervis, Dr John Volpe, Catherine Walker, Cath Wallace, Dr Jim Watson, Dr Sean Weaver, Malcolm Webb, Barry Webber, Mark Weldon, Dr Jez Weston, Cr Andrew Whiley, Hon. Fran Wilde, Professor Richard J. Wilkins, Dr Morgan Williams (patron of the Institute), Dr John Wilson and Graeme Wong.

# ANNUAL FINANCIAL REPORT

McGUINNESS INSTITUTE LIMITED

Year Ended 31 March 2015



## Contents

- 3 Company Directory
- 4 Compilation Report and Disclaimer of Liability
- 5 Approval of Financial Report
- 6 Statement of Profit or Loss
- 8 Statement of Movements in Equity
- 9 Balance Sheet
- 10 Notes to the Financial Statements
- 14 Schedule of Property, Plant and Equipment

## Company Directory

### McGuinness Institute Limited For the year ended 31 March 2015

#### Nature of business

Policy Analysis & Research focusing on New Zealand's long term future.

#### Registered office

Level 1  
Chartered Accountants House  
50 Customhouse Quay  
Wellington

#### Company number

1538950

#### IRD number

089-169-003

#### Director

Wendy McGuinness

#### Shareholder

McGuinness Foundation Trust

#### Chartered accountants

BDO Wellington Limited

#### Bankers

Kiwibank Limited

# Compilation Report and Disclaimer of Liability

## McGuinness Institute Limited For the year ended 31 March 2015

### Scope

On the basis of information you provided we have compiled, in accordance with Service Engagement Standard No 2: Compilation of Financial Information, the special purpose financial statements of McGuinness Institute for the year ended 31 March 2015. These have been prepared on the basis disclosed in note 1 to the financial statements.

### Responsibilities

The Director is solely responsible for the information contained in the financial statements and has determined that the financial reporting framework used is appropriate to meet their needs and the purpose that the financial statements were prepared.

The financial statements were prepared exclusively for the Director's benefit. We do not accept responsibility to any other person for the contents of the financial statements.

### No audit or review engagement undertaken

Our procedures use accounting expertise to undertake the compilation of the financial statements from information provided to us by the Director. Our procedures do not include verification or validation procedures. No audit or review engagement has been performed and accordingly no assurance is expressed.

### Disclaimer of liability

Neither we nor any of our employees accept any responsibility for the reliability, accuracy or completeness of the compiled financial information nor do we accept any liability of any kind whatsoever, including liability by reason of negligence, to any person for losses incurred as a result of placing reliance on the compiled financial information.



Director  
BDO Wellington Limited  
50 Customhouse Quay  
Wellington

Dated: 14 July 2015

# Approval of Financial Report

**McGuinness Institute Limited**  
**For the year ended 31 March 2015**

The Director is pleased to present the approved financial report including the historical financial statements of the McGuinness Institute Limited for the year ended 31 March 2015.

**Approved**

For and on behalf of the Board of Directors:



Wendy McGuinness



Date

---

This statement has been compiled without undertaking an audit engagement or review engagement and should be read with the Compilation Report-Disclaimer of Liability and Notes to the Financial Statements.

# Statement of Profit or Loss

## McGuinness Institute Limited For the year ended 31 March 2015

	NOTES	2015	2014
<b>Gross income</b>			
Donations		542,589	467,082
National Dates Book		197	837
<b>Total Gross Income</b>		<b>542,786</b>	<b>467,919</b>
<b>Other income</b>			
Interest Income		28	77
Other Revenue		39,597	21,176
<b>Total Other Income</b>		<b>39,625</b>	<b>21,253</b>
<b>Total income</b>		<b>582,411</b>	<b>489,172</b>
<b>Expenses</b>			
<b>Expenses</b>			
ACC		2,175	2,087
Annual Return Fees		-	44
Bad Debts		805	-
Bank Fees		134	137
Computer expenses		18,462	28,185
Consulting & Accounting		5,765	6,435
Cost of Publications: Editing		289	9,314
Cost of Publications: Printing		6,229	21,173
Cost of Purchasing Books and Publications		3,055	4,506
Depreciation		16,634	13,047
Domain Names		3,001	2,898
Donation		1,000	-
Entertainment		2,734	2,482
(Gain)/Loss on Disposal of Fixed Assets		92	369
General Expenses		567	1,223
Interest Expense		1,591	-
Insurance		2,414	1,941
ipayroll fees		687	883
Legal expenses		1,025	2,052
Light, Power, Heating		5,345	4,453
Membership and Subscription Fees		4,766	5,477
Occupancy Costs		77,589	81,783
Office Expenses		10,637	10,814
Other Technology Expenses		-	809
Postage, Freight & Courier		1,919	4,446
Project: AntiFragile NZ		-	87
Project: Empower NZ		-	2,678
Project: Livingstandards NZ		-	9,712
Project: Local NZ		24,398	-

This statement has been compiled without undertaking an audit engagement or review engagement and should be read with the Compilation Report-Disclaimer of Liability and Notes to the Financial Statements.

	2013	2014
Project Completion 142		539
Project Cost Management	4,535	3,191
Project Strategy 142	3,035	
Project Talent 142	9,792	11,131
Project Talent 142 Control	233	18,380
Repairs and Maintenance	1,887	5,555
Salaries	351,922	278,952
Stationery	1,071	8,724
Telephone & Internet	2,750	3,951
Training and Education	1,662	695
Travel - Individual	2,744	8,529
Health Screenings - New Zealand	3,979	1,575
<b>Total Expenses</b>	<b>562,557</b>	<b>565,623</b>
<b>Total Expenses</b>	<b>562,557</b>	<b>565,623</b>
<b>Net profit (loss) before taxation</b>	<b>21,534</b>	<b>(76,451)</b>
<b>Net profit (loss) for the year</b>	<b>21,534</b>	<b>(76,451)</b>

This financial statement has been compiled without undertaking any audit engagement and does not represent a statutory audit. It should not be used for purposes other than those intended. BDO is not a member of the Institute of Chartered Accountants in New Zealand.

## Statement of Movements in Equity

McGuinness Institute Limited  
For the year ended 31 March 2015

	2015	2014
<b>Equity</b>		
Opening Balance	(299,203)	(222,754)
Profit/(loss) for the Period	21,824	(76,451)
Retained Earnings	-	3
<b>Total Equity</b>	<b>(277,379)</b>	<b>(299,202)</b>

This statement has been compiled without undertaking an audit engagement or review engagement and should be read with the Compilation Report-Disclaimer of Liability and Notes to the Financial Statements.

# Balance Sheet

## McGuinness Institute Limited As at 31 March 2015

	NOTES	31 MAR 2015	31 MAR 2014
<b>Current assets &amp; liabilities</b>			
<b>Current assets</b>			
<b>Cash and short-term deposits</b>			
Kiwibank 00 Account	5	5,954	1,108
Kiwibank 01 Account	5	1,029	530
Kiwibank 02 Account	5	84	64
McGuinness Institute Paypal Ac	5	186	530
Petty Cash	5	10	10
<b>Total Cash and short-term deposits</b>		<b>7,263</b>	<b>2,242</b>
GST receivable		72	-
Accounts Receivable		-	1,540
<b>Total Current assets</b>		<b>7,335</b>	<b>3,782</b>
<b>Current liabilities</b>			
GST payable		-	23,932
Income tax payable	3	(8)	(12)
Shareholder current accounts		335,180	326,975
Accounts Payable		9,015	14,200
Accruals		11,589	23,646
<b>Total Current liabilities</b>		<b>355,776</b>	<b>388,741</b>
<b>Total Current assets &amp; liabilities</b>		<b>(348,441)</b>	<b>(384,959)</b>
<b>Working capital</b>		<b>(348,441)</b>	<b>(384,959)</b>
<b>Non current assets &amp; liabilities</b>			
<b>Non current assets</b>			
Property, plant and equipment	6	59,062	73,757
Bond - iPayroll		12,000	12,000
<b>Total Non current assets</b>		<b>71,062</b>	<b>85,757</b>
<b>Total Non current assets &amp; liabilities</b>		<b>71,062</b>	<b>85,757</b>
<b>Net assets</b>		<b>(277,379)</b>	<b>(299,202)</b>
<b>Equity</b>			
Retained earnings	2	(277,379)	(299,202)
<b>Total Equity</b>		<b>(277,379)</b>	<b>(299,202)</b>

This statement has been compiled without undertaking an audit engagement or review engagement and should be read with the Compilation Report-Disclaimer of Liability and Notes to the Financial Statements.



# Notes to the Financial Statements

## McGuinness Institute Limited For the year ended 31 March 2015

### 1. Statement of Accounting Policies

#### Reporting entity

The financial statements presented here are for the entity McGuinness Institute, incorporated under the Companies Act 1993.

#### Nature of business

The nature of the company's business has not changed during the year under review.

#### Basis of preparation

The director has chosen to prepare special purpose financial reports which may not necessarily comply with generally accepted accounting practice.

#### Historical cost

These financial statements have been prepared on a historical cost basis, except for certain assets which have been revalued as identified in specific accounting policies below.

#### Share capital

As at 31 March 2015, the company has issued 100 ordinary shares. Each fully paid ordinary share confers on the holder one vote at a meeting of the company, a share in distributions approved by the Directors, and a share in distribution of the surplus assets of the company on dissolution.

#### Changes in accounting policies

The company transitioned on 1 April 2014 from preparation of general purpose financial information in accordance with New Zealand generally accepted accounting practice ("NZ GAAP") to special purpose financial reporting. The transition had minimal impact on the accounting policies of the entity.

All accounting policies were applied consistently during the year.

#### Changes in accounting policies

There have been no changes in accounting policies. All policies have been applied on bases consistent with those used in previous years.

#### Accounts receivable

Accounts Receivable are stated at expected realisable value, after providing against debts where collection is doubtful. Bad debts are written off during the period in which they are identified.

---

This statement has been compiled without undertaking an audit engagement or review engagement and should be read with the Compilation Report-Disclaimer of Liability.

## Property, plant & equipment and depreciation

Property, plant and equipment and investment property are stated at historical cost less any accumulated depreciation and impairment losses. Depreciation is provided at the maximum rates permitted by the Income Tax Act 2007.

The depreciation rates used are as follows:

Office equipment	10% - 60% DV
The Library	20% - 24% DV
Shelving & Storage	10% - 16% DV

Where an item of property, plant or equipment is disposed of, the gain or loss recognised in the statement of financial performance is calculated as the difference between the sale price and the carrying amount of the asset.

## Income tax

The company is a Charitable entity registered under the Charities Act 2005 and qualifies for the charitable purposes exemption in sections CW41 and CW42 of the Income Tax Act 2007. Accordingly no provision has been made for income tax.

## Goods and services tax

The financial statements are stated exclusive of goods and services tax (GST) except for accounts receivable and accounts payable, which are stated inclusive of GST.

## Comparative figures

The comparative figures shown are for a twelve month period.

	2015	2014
<b>2. Equity</b>		
<b>Retained earnings/(accumulated losses)</b>		
Opening Balance	(299,203)	(222,754)
Current Year Earnings	21,824	(76,451)
Retained Earnings	-	3
<b>Total Retained earnings/(accumulated losses)</b>	<b>(277,379)</b>	<b>(299,202)</b>
<b>Total Equity</b>	<b>(277,379)</b>	<b>(299,202)</b>

Each fully paid ordinary share confers on the holder one vote at a meeting of the company, a share in distributions approved by Directors, and a share in distribution of the surplus assets of the company on dissolution.

	2015	2014
<b>3. Income tax</b>		
<b>Taxation movements</b>		
Opening balance	(12)	(70)
Taxation refunds	12	70

This statement has been compiled without undertaking an audit engagement or review engagement and should be read with the Compilation Report-Disclaimer of Liability.

	2015	2014
Share credits	16	12
<b>Total Taxation payments</b>	<b>70</b>	<b>12</b>

#### 4. Imputation credit account

The balance of the imputation credit account as at 2015 is \$7.66 (Last Year: \$12.05)

	2015	2014
--	------	------

#### 5. Cash and short-term deposits

##### Cash at bank and short-term deposits

Westbank of Account	5,594	1,118
Westbank of Account	1,391	670
Westbank of Account	64	61
McGuinness Institute Legal Ltd	166	520
Post Office	10	10
<b>Total Cash at bank and short-term deposits</b>	<b>7,263</b>	<b>2,542</b>

	2015	2014
--	------	------

#### 6. Property, plant and equipment

##### Shelving & Storage

Shelving & Storage owned	21,248	22,242
Accumulated depreciation - shelving & storage owned	(2,461)	(4,114)
<b>Total Shelving &amp; Storage</b>	<b>18,787</b>	<b>18,128</b>

##### Office Equipment

Office Equipment owned	12,188	16,771
Accumulated depreciation - office equipment owned	(4,674)	(47,532)
<b>Total Office Equipment</b>	<b>19,739</b>	<b>73,918</b>

##### The Library

The Library owned	40,628	44,738
Accumulated depreciation - the library owned	(18,492)	(29,234)
<b>Total The Library</b>	<b>21,436</b>	<b>24,512</b>

<b>Total Property, plant and equipment</b>	<b>59,662</b>	<b>73,112</b>
--	---------------	---------------

#### 7. Going concern

The validity of the going concern assumption on which this financial report is prepared depends on the continued financial support of the shareholder.

If the support is withdrawn, adjustments may have to be made to reflect the situation that assets may need to be realised other than the amounts at which they are currently recorded in the Statement of Financial Position. In addition, the company may have to provide for further liabilities that may arise.

This statement has been prepared without a statutory audit by a firm of Chartered Accountants in New Zealand, Chartered Accountants in Hong Kong, Chartered Accountants in the United Kingdom and Chartered Accountants in the United States of America.

### 8. Related Parties

Wendy McGuinness, who is a director of this company, is also a director of MCGuinness & Associates Limited, which has loaned funds to MCGuinness Institute Limited during the year. The loan is interest free and repayable on demand.

Wendy McGuinness is also a trustee of the McGuinness Foundation Trust which owns 100% of this company.

### 9. Occupancy Costs

During the year, as per prior years, Willis Bend & Co made payments on behalf of the Institute for occupancy costs encompassing rent rates, landline and water/sewerage charges. These contributions by Willis Bend & Co have been recognized as donation to the Institute and the 'Occupancy Costs' reported as a separate line item.

# Schedule of Property, Plant and Equipment

McGuinness Institute Limited

For the year ended 31 March 2015

ASSET NUMBER	NAME	COST	OPENING VALUE	PROVISIONS	SALE PRICE	DEP RECOVERED	LOSS	CAPITAL GAIN	RATE	METHOD	DEPRECIATION	CLOSING ACCUM DEP	CLOSING VALUE
<b>Furniture and Fixtures</b>													
FA-0020	12 x Lite High Back Task Chairs	6,274	3,746	-	-	-	-	-	10% DV	-	335	4,883	1,411
FA-0030	2 x Traffic Team 1200*1050	1,619	565	-	-	-	-	-	10% DV	-	91	1,125	494
FA-0025	4 x Classic Level Workstations	3,176	1,148	-	-	-	-	-	10% DV	-	179	3,207	969
FA-0055	5 x bookshelves	579	113	-	-	-	-	-	40% DV	-	45	511	18
FA-0056	Adobe Master Collector software	5,982	225	-	-	-	-	-	50% DV	-	112	1,850	112
FA-0040	Adobe CS4 Design Premier Magnum Mac	708	9	-	-	-	-	-	50% DV	-	6	704	4
FA-0064	Art, Printer Webb	1,040	876	-	-	-	-	-	10% DV	-	80	311	709
FA-0063	Artwork	779	578	-	-	-	-	-	10% DV	-	58	258	521
FA-0086	Brother Laser Printer	865	367	-	-	-	-	-	40% DV	-	147	945	210
FA-0042	CCTV & Intruder System	3,552	1,067	-	-	-	-	-	24% DV	-	256	3,141	811
FA-0045	Genatc THERMATIC2048-6405C4 2GB	533	13	-	-	-	-	-	50% DV	-	8	528	5
FA-0033	Lenovo Round table BT*	3,034	1,422	-	-	-	-	-	10% DV	-	222	2,174	1,200
FA-0035	Genl Server	3,567	3,638	-	-	-	-	-	50% DV	-	1,818	3,149	1,818
FA-0027	Grid CND 1400 Return	581	181	-	-	-	-	-	18% DV	-	28	348	133
FA-0028	Grid CND Compact 1300*1030 Return 81500*1030 Return, As Grid Full Screen	3,140	419	-	-	-	-	-	14% DV	-	65	866	304
FA-0026	Grid Outlook 2400 Executive desk	949	371	-	-	-	-	-	18% DV	-	42	531	218
FA-0084	Grid Workstation X2	1,560	1,298	-	-	-	-	-	13% DV	-	169	430	1,130
FA-0029	HP-0005-White	507	43	-	-	-	63	-	50% DV	-	-	864	-
FA-0054	HP-Cembo	1,339	112	-	-	-	-	-	50% DV	-	66	1,264	66
FA-0050	HP-Computer	1,461	160	-	-	-	-	-	10% DV	-	80	1,381	80
FA-0043	HP-84 2810 F500	1,744	29	-	-	-	29	-	50% DV	-	-	1,715	-
FA-0052	Mac	2,009	209	-	-	-	-	-	50% DV	-	104	1,896	104
FA-0057	Mac	2,659	316	-	-	-	-	-	50% DV	-	163	2,487	163
FA-0005	iPad 2 16-G	999	240	-	-	-	-	-	50% DV	-	125	874	125
FA-0048	Kyocera FS-C1060dn Colour Printer	741	134	-	-	-	-	-	40% DV	-	53	661	80
FA-0049	Kyocera FS-C1060dn Colour Printer	736	148	-	-	-	-	-	40% DV	-	59	647	89
FA-0038	Lacie Rugged 320GB HDD (Apple Store)	741	5	-	-	-	-	-	50% DV	-	3	739	3
FA-0015	Laser Printer	1,037	35	-	-	-	-	-	40% DV	-	12	1,014	13
FA-0060	Lenovo Table Chrome White	1,487	1,063	-	-	-	-	-	13% DV	-	138	762	505
FA-0062	MacBook Air 11"	1,697	348	-	-	-	-	-	50% DV	-	184	1,423	314
FA-0039	Macri Artwork for Office	1,006	527	-	-	-	-	-	12% DV	-	63	136	464
FA-0002	Microsoft Office 365	945	512	-	-	-	-	-	50% DV	-	256	329	204
FA-0046	Mura Chrome Black Table & stool	2,532	1,085	-	-	-	-	-	16% DV	-	169	1,416	114
FA-0051	MS Home Office and Business 2013	1,079	122	-	-	-	-	-	50% DV	-	61	1,005	61
FA-0059	Painting, Exhibitions	778	578	-	-	-	-	-	100% DV	-	59	250	528
FA-0021	Phone System	3,341	230	-	-	-	-	-	30% DV	-	83	3,194	147
FA-0001	Pro Desk 600 G	7,413	1,114	-	-	-	-	-	50% DV	-	3,557	3,866	3,557
FA-0018	Projector	814	142	-	-	-	-	-	20% DV	-	37	790	104
FA-0025	Rehabitation LM	3,318	18	-	-	-	-	-	50% DV	-	11	3,321	7
FA-0053	Sanyo MGA Linemar Projector PLC-RJ1166	3,112	872	-	-	-	-	-	25% DV	-	218	1,454	654

This statement has been compiled without undertaking an audit engagement to review engagement and should be read with the Completion Report (Disclosure of Liability and Index) to the Financial Statements.

Category	Item	SKU	Quantity	Unit Price	Unit Cost	Net Price	Net Cost	Net Margin	Net Margin %	Subtotal
Furniture and Shelving	1.00 2x4x8 Plywood	140	30	4200	3000	1200	3000	100%	1200	1200
	Shelving & Storage									
	1.00 2x4x8 Plywood	140	30	4200	3000	1200	3000	100%	1200	1200
	1.00 2x4x8 Plywood	140	30	4200	3000	1200	3000	100%	1200	1200
The Bakery	1.00 2x4x8 Plywood	140	30	4200	3000	1200	3000	100%	1200	1200
	1.00 2x4x8 Plywood	140	30	4200	3000	1200	3000	100%	1200	1200
	1.00 2x4x8 Plywood	140	30	4200	3000	1200	3000	100%	1200	1200
	1.00 2x4x8 Plywood	140	30	4200	3000	1200	3000	100%	1200	1200
	1.00 2x4x8 Plywood	140	30	4200	3000	1200	3000	100%	1200	1200
	1.00 2x4x8 Plywood	140	30	4200	3000	1200	3000	100%	1200	1200
	1.00 2x4x8 Plywood	140	30	4200	3000	1200	3000	100%	1200	1200
	1.00 2x4x8 Plywood	140	30	4200	3000	1200	3000	100%	1200	1200
	1.00 2x4x8 Plywood	140	30	4200	3000	1200	3000	100%	1200	1200
	1.00 2x4x8 Plywood	140	30	4200	3000	1200	3000	100%	1200	1200
	1.00 2x4x8 Plywood	140	30	4200	3000	1200	3000	100%	1200	1200
	1.00 2x4x8 Plywood	140	30	4200	3000	1200	3000	100%	1200	1200
	1.00 2x4x8 Plywood	140	30	4200	3000	1200	3000	100%	1200	1200
	1.00 2x4x8 Plywood	140	30	4200	3000	1200	3000	100%	1200	1200
	1.00 2x4x8 Plywood	140	30	4200	3000	1200	3000	100%	1200	1200
	1.00 2x4x8 Plywood	140	30	4200	3000	1200	3000	100%	1200	1200
	1.00 2x4x8 Plywood	140	30	4200	3000	1200	3000	100%	1200	1200
	1.00 2x4x8 Plywood	140	30	4200	3000	1200	3000	100%	1200	1200
	1.00 2x4x8 Plywood	140	30	4200	3000	1200	3000	100%	1200	1200

DESCRIPTION	DATE	AMOUNT	CHECK NO.	BANK	BALANCE
Initial Deposit	12/31/2023	10000.00			10000.00
Withdrawal	01/15/2024	5000.00	101	ABC BANK	5000.00
Interest	02/28/2024	100.00			5100.00
Withdrawal	03/10/2024	2000.00	102	ABC BANK	3100.00
Interest	04/30/2024	50.00			3150.00
Withdrawal	05/20/2024	1000.00	103	ABC BANK	2150.00
Interest	06/30/2024	25.00			2175.00
Withdrawal	07/15/2024	1000.00	104	ABC BANK	1175.00
Interest	08/31/2024	50.00			1225.00
Withdrawal	09/10/2024	500.00	105	ABC BANK	725.00
Interest	10/31/2024	25.00			750.00
Withdrawal	11/20/2024	250.00	106	ABC BANK	500.00
Interest	12/31/2024	50.00			550.00

2015 INCOME TAX RETURN

For : McGuinness Institute Ltd

DISCLAIMER OF LIABILITY

We have compiled the attached tax return for the abovenamed client for the income tax year ended 31st March 2015.

A compilation is limited primarily to the collection, classification and summarisation of financial information supplied by the client. A compilation does not involve the verification of that information. We have not performed an audit or a review and therefore neither we nor any of our employees accept any responsibility for the accuracy of the information from which the return has been prepared. Further, the return has been prepared at the request of and for the purpose of the client only and neither we nor any of our employees accept any responsibility on any grounds whatsoever, including liability for negligence, to any other person.

*BDO Wellington Ltd*  
BDO Wellington Limited  
50 Customhouse Quay  
WELLINGTON 6011

Dated : *14 July 2015*  
Phone : (04) 472-5850  
Fax : (04) 473-3582



**INCOME & DEDUCTIONS**

**Income Received**

	Tax	Income	
Interest	7.80	0.00	
Total	<u>7.80</u>		0.00

**TAXABLE INCOME**

\$0.00

Taxation on Income  
 Tax on 2015 Income

0.00

Less: Tax Already Deducted  
 Total from Income Received, Tax above

7.80

**RESIDUAL INCOME TAX**

(\$7.80)

**TAX CREDIT AVAILABLE**

(\$7.80)

**TOTAL REFUND**

(\$7.80)

**PAYMENT SUMMARY**

	28/08/2015	15/01/2016	07/04/2016	07/05/2016	TOTAL
Prov Tax	0.00	0.00	0.00	0.00	0.00
Refund	0.00	0.00	(7.80)	0.00	(7.80)
Total	<u>0.00</u>	<u>0.00</u>	<u>(7.80)</u>	<u>0.00</u>	<u>(7.80)</u>

**INTEREST**

Payer	RWT	Earnings
Kiwibank	7.80	0.00
TOTAL	57.80	50.00

**SHAREHOLDER DISTRIBUTION**

Shareholder's name	The McGuinness Foundation Trust	
IRD Number		
Attributed loss		0.00
Remuneration		0.00
Value of loans		0.00
Current A/c balance	Credit	0.00
Loss of assets		0.00
Subvention payments		0.00

**INCOME FROM BUSINESS OR RENTAL ACTIVITIES**

Description	Earnings
Total	50.00

Income		
12A	0.00	Withholding Tax Deductions.
12B	0.00	Gross Earnings.
<hr/>		
13A	7.80	Total RWT on Interest.
13B	0.00	Total Gross Interest.
14	0.00	Total Dividend Imputation Credits.
14A	0.00	RWT & Withholding Payment Credits.
14B	0.00	Gross Dividends.
15A	0.00	Total Maori Authority Credits.
15B	0.00	Total Maori Authority Distributions.
16A	0.00	Tax Credits (Partnerships/Estate/Trust).
16B	0.00	Partnership/Estate/Trust Income.
17A	7.80	Total Tax Paid.
18A	0.00	Overseas Tax Paid.
18B	0.00	Overseas Income.
19B	0.00	Net Profit/Loss.
20A	2.00	Total Premiums Paid to Switzerland or the Netherlands.
20B	2.00	Taxable Premiums Paid to Overseas Insurer.
21B	0.00	Other Income.
23B	0.00	Donations Deduction amount.
25A	0.00	Amount of loss brought forward.
25B	0.00	Amount of loss claimed this year.
27	0.00	Total Losses.
27A	0.00	Total Surrendered Losses.
28	0.00	Taxable Income.
<hr/>		
Tax Calculation		
29B	0.00	Tax on Taxable Income.
29E	0.00	Foreign Investors Tax Credit.
29J	-7.80	Residual Income Tax.
	CREDIT	Debit or Credit Indicator.
29L	7.80	Refund or Tax to Pay.
	R	Refund or Tax to Pay Indicator.
30A	0.00	Transfer to 2016 Provisional Tax.
30B	N	Are you associated Income Tax
30C		
30C		Year to be transferred to.
30D	0.00	Transfer to Other Client.
31		Provisional Tax Commencement Date.
32A	S	Provisional Tax Option.
32B	0.00	2016 Provisional Tax Payable.

---

Shareholders/Disclosures

13	N	Payments to Non-Residents.
13A	N	Was Non-Resident withholding tax and/or non-resident contractor withholding tax deducted?
14	N	Did the Company at any time during the year hold rights in a foreign Company, Unit Trust, Superannuation Scheme or Life Insurance Policy for which a disclosure is required?
15	N	Did the Company Repurchase, Redeem or Cancel any Shares during the year?
16	N	Did the Company receive any foreign sourced dividends during the year?
17	N	Is the Company controlled/owned by non-Residents?
18	100 CC %	The Total Lowest Economic Interest of shareholders during the income year.

---

Annual Imputation Return			
40		-12.05	Opening Balance.
	CREDIT		Debit or Credit Indicator.
41A		0.00	Income Tax Paid.
41B		0.00	Foreign Dividend Payments paid.
41C		7.60	Resident Withholding Tax on interest recd.
41D		0.00	IMF, and Foreign Dividend Payment Credits Attached to dividends received.
41E		0.00	Other Credits.
42A		12.05	Income Tax Refunded.
42B		0.00	Foreign Dividend Payment Refunds.
42C		0.00	Imputation Credits attached to Div's paid.
42D		0.00	Other Debits.
43		-7.80	Closing Balance
	CREDIT		Debit or Credit Indicator
43A		0.00	Adjustment to reduce further income tax Payable.
43B		0.00	Further Income Tax payable

Foreign Dividend Payment Account Return			
46		0.00	Opening Balance.
	DEBIT		Debit or Credit Indicator
47A		0.00	Foreign Dividend Payments Paid.
47B		0.00	Foreign Dividend Payment Credit attached to dividends received
48A		0.00	Foreign Dividend Payment Credit attached to dividends paid.
48B		0.00	Foreign Dividend Payments Refunded.
48C		0.00	Other Debits.
49		0.00	Sub Total.
	DEBIT		Debit or Credit Indicator
50		0.00	Amount Transferred to Imputation Acct.
51		0.00	Closing Balance.
	DEBIT		Debit or Credit Indicator

IRD Office Use only:

54	Operator Code	[ ]	Correspondence Inc	[N]
	Payment Attached	[ ]	Return Category	[ ]
	Scanner	[ ]	Accounts Attached	[N]
54A	Operator Code	[ ]	Correspondence Inc	[N]
	Payment Attached	[ ]	Return Category	[ ]
	Scanner	[ ]		

Summary of Shareholders - IR15

Attachment 1

	The McGuinness Foundation T	Name of Shareholder/Director/Relative, IRD Number.
39A		IRD Number.
39B	0.00	Remuneration - No PAYE deducted.
39C	0.00	Value of loans from Company.
39D	0.00	Current Account Balance.
	CREDIT	Debit or Credit Indicator.
39E	0.00	Loss Offsets.
39F	0.00	Subvention Payments.

Client Information

1 N Client information amended?  
089-169-003 IRD Number.  
3 Name the Company trades under.  
4 Mailing address.  
5 Suburb and City.  
6 Street Address.  
Suburb and City.  
ACC Business Industry Code.  
7 Day time phone number.  
8

Tax Practitioner Information

096-921-254 /002 Firms IRD / E-File Number.  
Rachel H Farrant Firms Name.  
PO Box 10-340 Wellington 6011 Mailing address.  
(04) 472-5850 Phone number.  
(04) 473-3582 Fax number.

E-File Specific Information

9 N New Zealand non-resident?  
Y Standard disclaimer applies?  
N Correspondence attached?  
N IR10 Attached?  
Y Electronic NOA required?  
N Payment Sent  
Returns data checksum.

Privacy

Meeting your tax obligations means giving us accurate information so we can assess your liabilities or your entitlements under the Acts we administer. We may charge penalties if you don't. We may also exchange information about you with: some government agencies, another country if we have an information supply agreement with them, Statistics New Zealand (for statistical purposes only). If you ask to see the personal information we hold about you, we'll show you and correct any errors, unless we have a lawful reason not to. Call us on 0800 377 774 for more information. For full details of our privacy policy go to [www.ird.govt.nz](http://www.ird.govt.nz) (keyword: privacy).

Declaration

The information in this return is true and correct and represents My assessment for the year ended 31 March 2015 as required under the Tax Administration Act 1994.

Signature:



Date:

15 July 2015

---

Return prepared by:

098-921-254 7002  
Rachel H Farrant  
PO Box 10-340 Wellington 5011

(04) 472-5850  
(04) 473-3582

Prints IRD / E-File Number.  
Firms Name.  
Mailing address.

Phone number.  
Fax number.

---



Annual Imputation Return			
40		-12.05	Opening Balance.
	CREDIT		Debit or Credit Indicator.
41A		0.00	Income Tax Paid.
41B		0.00	Foreign Dividend Payments paid.
41C		7.80	Resident Withholding Tax on Interest rec'd.
41D		0.00	WAP, and Foreign Dividend Payment Credits Attached to dividends received.
41E		0.00	Other Credits.
42A		-2.05	Income Tax Refunded
42B		0.00	Foreign Dividend Payment Refunds.
42C		0.00	Imputation Credits attached to Div's paid
42D		0.00	Other Debits
43		-7.80	Closing Balance.
	CREDIT		Debit or Credit Indicator
43A		0.00	Adjustment to reduce further Income Tax Payable.
43B		0.00	Further Income Tax payable.

Foreign Dividend Payment Account Return			
45		0.00	Opening Balance.
	DEBIT		Debit or Credit Indicator
47A		0.00	Foreign Dividend Payments Paid.
47B		0.00	Foreign Dividend Payment Credit attached to dividends received.
48A		0.00	Foreign Dividend Payment Credit attached to dividends paid.
48B		0.00	Foreign Dividend Payments Refunded.
48C		0.00	Other Debits.
49		0.00	Sub Total.
	DEBIT		Debit or Credit Indicator
50		0.00	Amount Transferred to Imputation Acct.
51		0.00	Closing Balance.
	DEBIT		Debit or Credit Indicator

IRD Office use only:

54	Operator Code	::	Correspondence Inc	[N]
	Payment Attached	::	Return Category	[ ]
	Scanner	::	Accounts Attached	[N]
54A	Operator Code	::	Correspondence Inc	[N]
	Payment Attached	::	Return Category	[ ]
	Scanner	::		[ ]

## **MCGUINNESS INSTITUTE**

ISBN 978-1-972193-66-2 (PDF)

Published July 2015

PO Box 24222

Wellington 6142

New Zealand

[www.mcguinnessinstitute.org](http://www.mcguinnessinstitute.org)