

**A thriving
New Zealand ...but a
worldly
disaster**

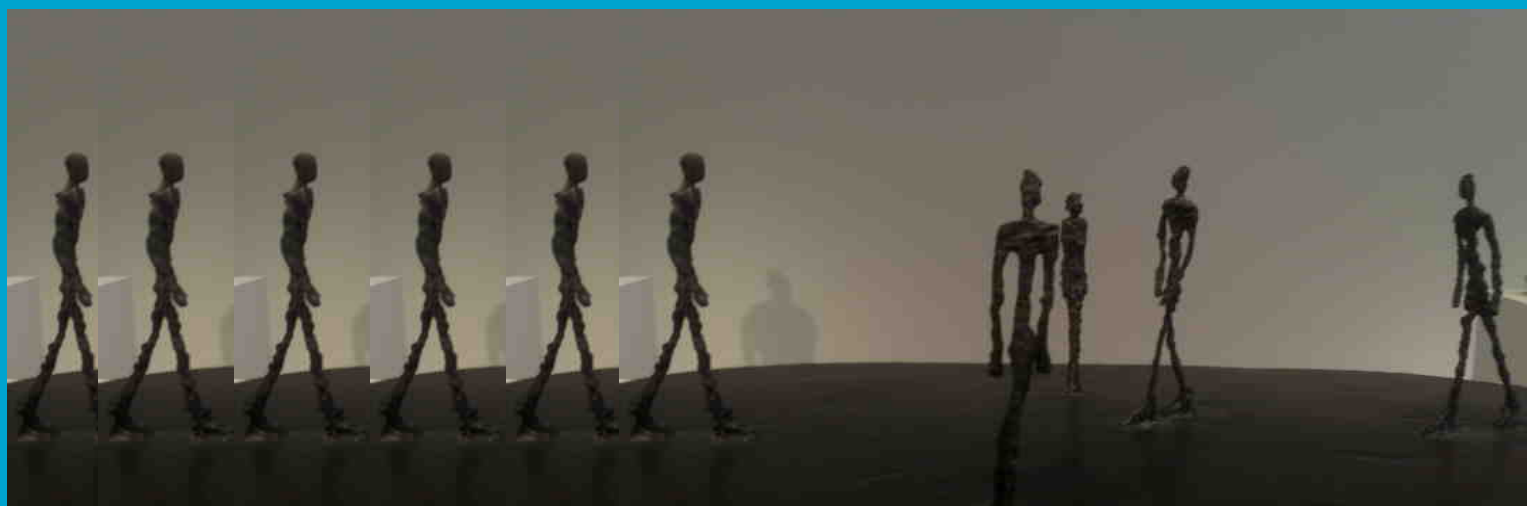
sustainablefuture.info

Population & Climate Change

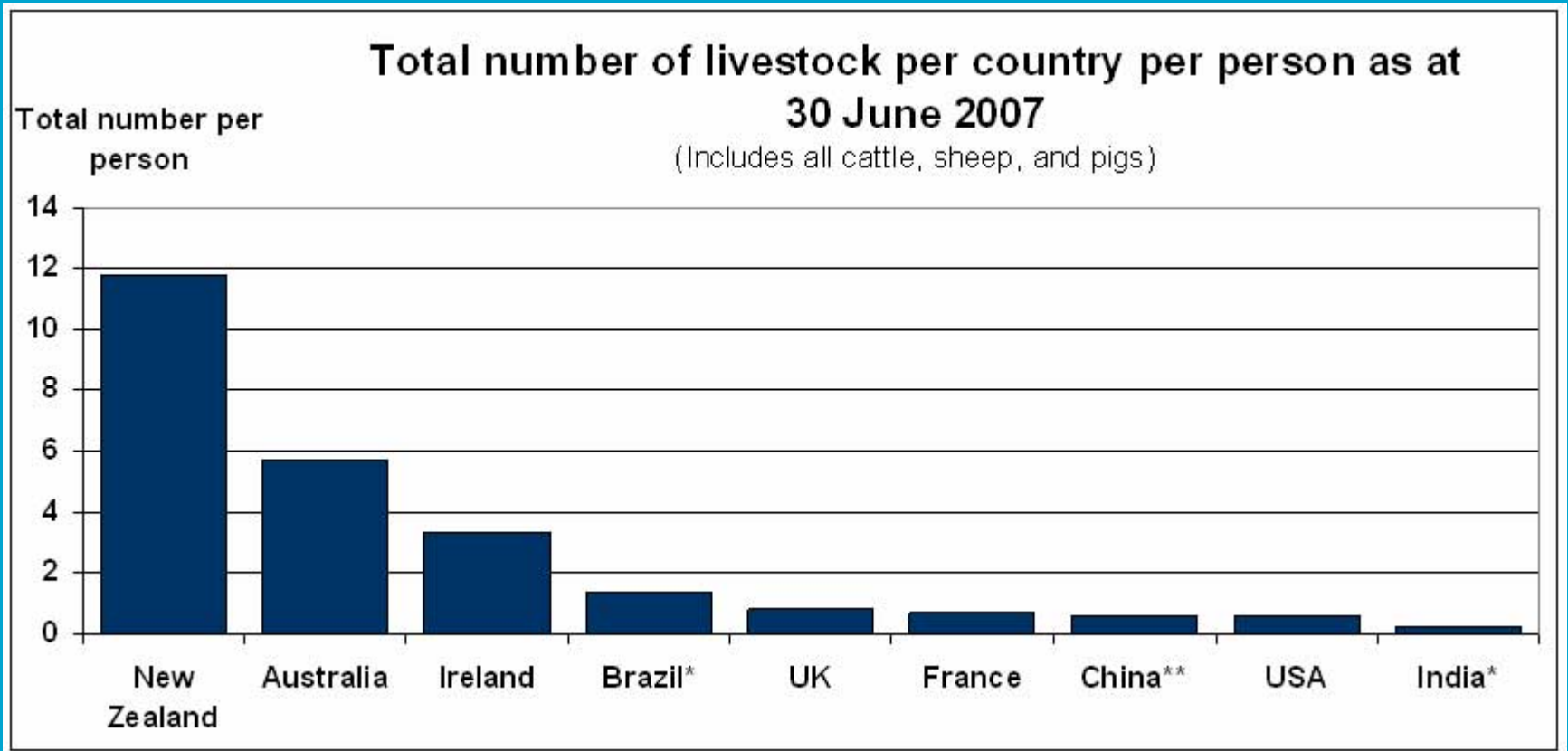
Today



**In 50
Years**



Food, Energy & Water



Crime & Terrorism

- **Crime is global, Policing is national**
- **\$1 trillion pa Illicit Trade**
- **150 reports of unauthorised use of nuclear or radioactive materials in the last 4 years**



A high-angle, wide shot of a massive crowd of people swimming in the ocean. The water is dark and choppy, with many whitecaps. Swimmers are seen from above, wearing various colored swim caps (red, blue, yellow, white) and swimwear. The density of the crowd is high, filling most of the frame. In the center-right, there is a light blue speech bubble with a black border and a tail pointing towards the bottom left. Inside the bubble, the text "Is this the way to Wellington, New Zealand?" is written in a bold, black, sans-serif font.

**Is this the
way to
Wellington,
New
Zealand?**

Jobless in Henley Part XIV

Our recession diarist considers taking a bold leap to beat the recession: emigrating.

By Julie Salt 04 Mar 2009



Although the upheaval involved should not be underestimated, it is tempting to consider a fresh start. So who knows, perhaps “Jobless of Henley” could yet become “Working of Wellington”.

**Can't wait to
try out the
fish on the
new Barbie
tonight...**

DANGER!
SWIMMING IS FORBIDDEN
THE SEA WATER IS POLLUTED



Over the last 30 minutes, the police radio has announced a gale warning for the Wellington Region, a boat suspected of drug trafficking off Island Bay, boat people off the Wairarapa coast, a fleet of illegal fishing boats off Kapiti Island and an evacuation of Eastborne due to a road slip ... and I think my mate is taking back hander's from the Aussie Mob?

Which should I deal with first?



What does this world look and feel like for New Zealanders living in the Wellington Region?

- How do we protect and make safe: our family, our assets, our resources...from global crime, terrorism, resource wars, extreme weather?**
- How do we pay for the costs of policing our waters, our airways?**
- How do we manage those starving at our door?**

Who do we let in?

**Pacific Islanders, Australians, Africans, Bangladeshi,
Indians, ...**



**The World
is going to
Find Us !**



The background consists of a 3x3 grid of colored squares. The colors are: top-left (light green), top-middle (bright blue), top-right (orange), middle-left (bright blue), middle-middle (light green), middle-right (dark blue), bottom-left (orange), bottom-middle (dark blue), and bottom-right (bright blue).

sustainablefuture.info